

SCHOOL EXPEDITIONS

2007 : TANZANIA

2009 : BORNEO

2010 : INDIA

2011 : KENYA

2012: INDIA

2013: KENYA

2014: ZAMBIA

2016: NEPAL

2017: UGANDA

2018: NEPAL

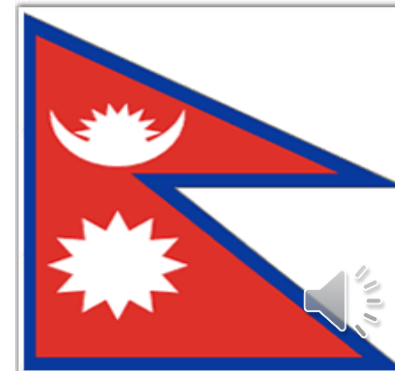
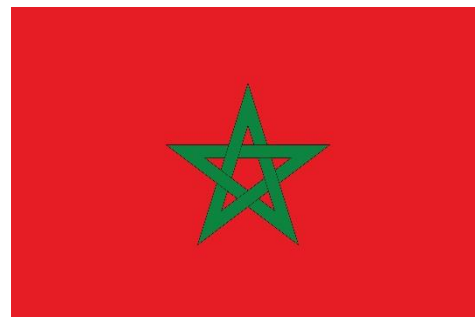
2019: NEPAL

2022: Uganda

2023: Morocco

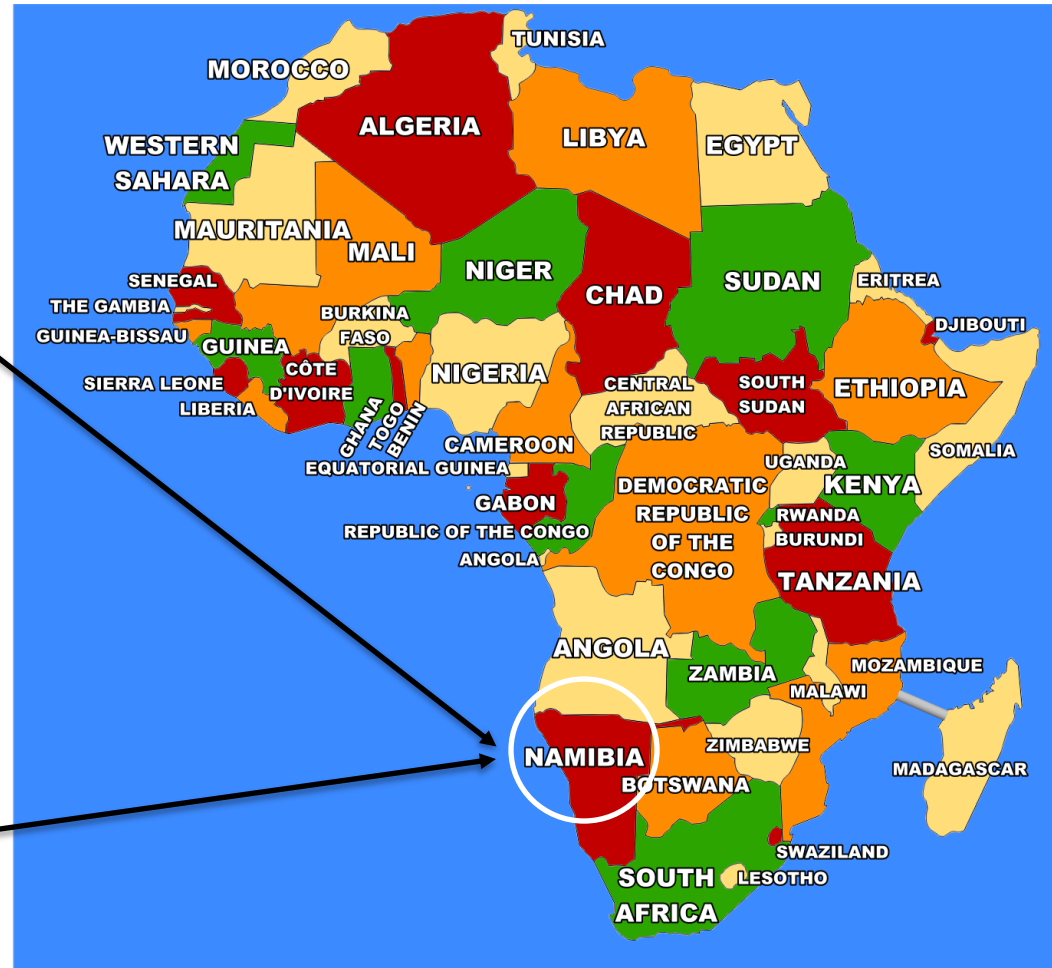
2024: Eswatini

2025: Cambodia.....





Project Namibia

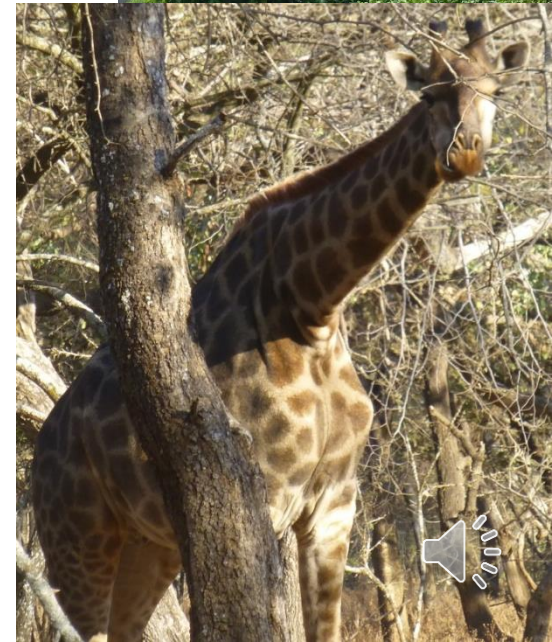
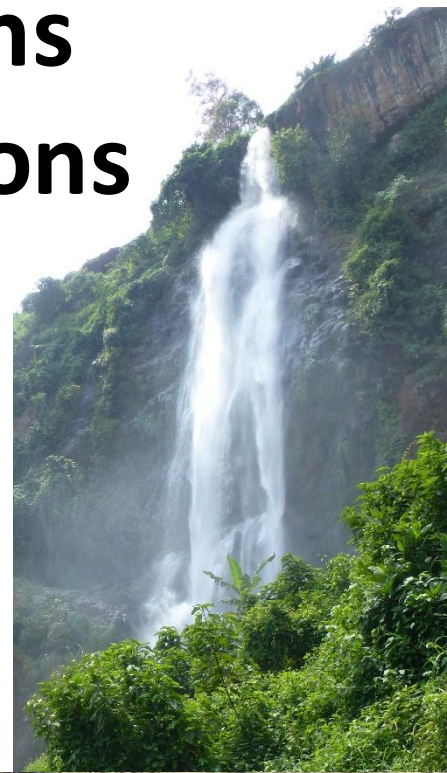


Carrington School 2026



What will you be doing?

Life signs Expeditions

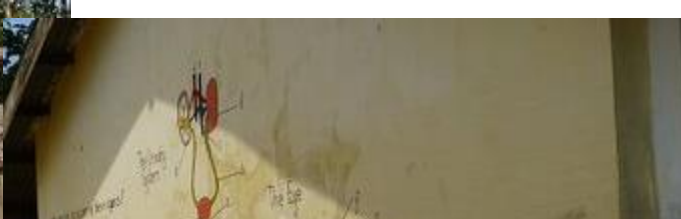




Itala Foundation School

P.O BOX 840167 MKUSHI







DAY 1-2

The team need to be at the airport 3 hours prior to departure. Touchdown in Windhoek and transfer to your campsite.



DAY 3-4

Today, the team will travel to Sesriem, home to the magnificent Dune 45! Set up camp and enjoy a night under the stars. Tomorrow the team will head into Sossuvlei to walk up Dune 45 and view the mesmerising petrified trees. It's best to try to get to the top of Dune 45 before early so you can watch a spectacular sunrise.

Following this, they will continue their journey to their project site in Uis. Project tasks to be confirmed. Whilst on project, the team could visit the world-famous white lady cave painting in an afternoon.



DAY 5-11

Travel north to Uis, where the team will be working alongside a local school and the local community for their project. Project tasks will be confirmed closer to departure but over the 6 full days on project, the team could also visit the world-famous white lady cave painting on an afternoon.



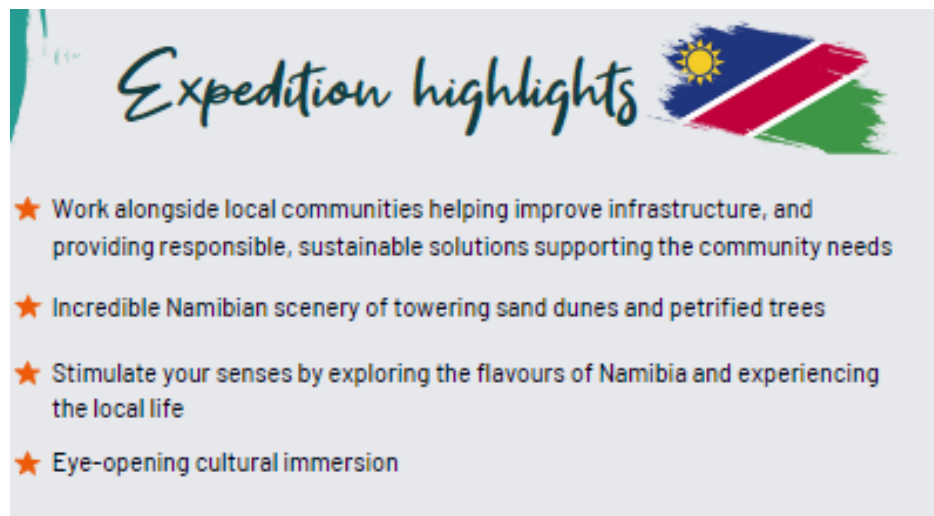
DAY 12-13

Making their way back to Windhoek to spend their last two nights in Namibia in the small nature reserve of Daan Viljoen. Enjoy a game drive to spot some of Namibia's wildlife during a game drive.



DAY 14-15

Return to Windhoek, exploring the colonial city and markets if there is time before your return flight to the UK. Fly home ready to share your adventure with loved ones!



Expedition highlights

- ★ Work alongside local communities helping improve infrastructure, and providing responsible, sustainable solutions supporting the community needs
- ★ Incredible Namibian scenery of towering sand dunes and petrified trees
- ★ Stimulate your senses by exploring the flavours of Namibia and experiencing the local life
- ★ Eye-opening cultural immersion

[Bespoke Overseas Expeditions for Schools \(adventurelivesigns.co.uk\)](https://adventurelivesigns.co.uk)



What next?

Fund raise **£2970**– car wash, gardening, school events, private events, birthdays/ christmas

Parents meeting early September

Deposit by end of September (£300-400)

Further deposits (can spread payments out in school with a payment plan)

Final payment April 2026

3 training sessions:

1 x after school

1 x weekend

1 x afternoon on day/ day before travel

